



*4-Color Process Print*

# GOURMET PACKAGING 2019-20



## *New in 2019*

<i>Tawny 1-Bottle Box</i> .....	5
<i>Barn Wood Wine Packaging Collection</i> .....	6
<i>Argento Bottle Boxes</i> .....	6
<i>Natural Kraft Magnetic Gift Boxes</i> .....	8

## WHAT IS

### 4-COLOR PROCESS PRINT?

Refers to printing using only 4 colors of ink (Cyan, Magenta, Yellow and Black) to create a color range of thousands of colors.



## 4-Color Process Print

**Full Color Spectrum**  
**Minimum 50 Pieces**

**Price includes:**  
**Printing, Product,**  
**& ALL Setup Charges!**



Price per EACH

Product Code	Size	Ctn	Actual (Ship) Wt
<b>Gable Boxes (Recyclable &amp; Biodegradable) - Made in USA</b>			
<b>Natural Kraft Pinstripe</b>			
BX-GB644KRA	6" x 4" x 4"	100	8 (8)
BX-GB845KRA	8" x 4-7/8" x 5-1/4"	100	13 (13)
BX-GB853KRA	8-7/8" x 5" x 3-1/2"	250	37 (37)
BX-GB955KRA	9-1/2" x 5" x 5"	125	23 (23)
<b>White Gloss (Smooth white exterior and kraft interior)</b>			
BX-GB644WHI	6" x 4" x 4"	100	13 (13)
BX-GB845WHI	8" x 4-7/8" x 5-1/4"	100	17 (17)
BX-GB853WHI	8-7/8" x 5" x 3-1/2"	250	47 (47)
BX-GB955WHI	9-1/2" x 5" x 5"	125	26 (26)

## Gourmet Packaging



## 4-Color Process Print

**Minimum 50 Pieces**

**Price includes Printing,**  
**Product, and All**  
**Setup Charges!**



Price Per EACH

Product Code	Style	Size	Ctn
<b>Clear View 2 piece Box (Natural Eflute folding base with clear tucking lid) Made in Italy</b>			
PR-ITCV53__AVA	2 pc box	5-7/8" x 3-7/8", Add 1 (1-3/8") or 3 (3-1/8") depth	50
PR-ITCV75__AVA	2 pc box	7-7/8" x 5-7/8", Add 1 (1-3/8") or 3 (3-1/8") depth	50
PR-ITCV97__AVA	2 pc box	9-7/8" x 7-1/2", Add 1 (1-3/8") or 3 (3-1/8") depth	50
<b>Portavasetti Jar Carriers with Windows (Natural Eflute Texture) Made in Italy</b>			
PR-ITPOR__	2 jar	Choose POR2, POR4, POR6, POR8, or POR10	100
PR-ITPOR__	3 jar	Choose POR3, POR5, POR7, POR9, or POR11	100
<b>"Textured Rib" Bottle Boxes &amp; Carriers (Natural Eflute Texture) Made in Italy</b>			
<b>Bottle Boxes (200 ml or 375 ml) "Textured Rib" Natural Textured Rib</b>			
PR-ITOB1__AVA	1 bottle	Add T (Tall) or G (Grande)	100
PR-ITOB2__AVA	2 bottle	Add S (Small), T (Tall) or G (Grande)	50
PR-ITOB3__AVA	3 bottle	Add S (Small), T (Tall) or G (Grande)	50
<b>Bottle Box (750 ml Wine) (Tawny only) "Textured Rib" Natural Textured Rib</b>			
PR-LTWB7TAW	2 bottle	7-7/8" x 13-3/16" x 3-1/2"	20
PR-LTWB11TAW	3 bottle	10-3/4" x 13-1/8" x 3-1/2"	20



# Gourmet Packaging

## "Textured Rib" Bottle Boxes & Carriers



## Portavasetti Italian Window Carriers



## Clear View 2-Piece Boxes



## View-It 2-Piece Boxes



# Custom Printed Boxes & Carriers

 **4-Color Process Print**

Minimum 50 Pieces

**Price includes:  
Printing, Product,  
& ALL Setup Charges!**



Price below includes one side printing, product and ALL set up charges.

Must be ordered in full cases.

Production Time: 7-10 business days from proof approval

Subject to review of artwork and pricing if print area exceeds 75% of print surface.

Exact PMS colors are not possible as all colors are converted to CMYK. Reference a Pantone PMS color bridge to see how your PMS color will appear. Prices subject to review of art. Additional charges may apply to orders with excess ink coverage.

## Gourmet Packaging

Price Per EACH

Product Code	Style	Size	Ctn	Actual (Ship) Wt
<b>Tall Bottle Carrier (200 ml) (All colors in catalog)</b>				
PR-ITOC2T	2 bottle	4-1/4" x 2-1/8" x 12"	50	8 (9)
PR-ITOC3T	3 bottle	6-5/8" x 2-1/8" x 12"	50	11 (11)
<b>Grande Bottle Carrier (375 ml) (All colors in catalog)</b>				
PR-ITOC2G	2 bottle	5-1/8" x 2-1/2" x 13-1/4"	50	11 (11)
PR-ITOC3G	3 bottle	7-7/8" x 2-1/2" x 13-1/4"	50	14 (14)
<b>Wine Bottle Carrier (750 ml) (All colors in catalog)</b>				
PR-ITBC2	2 bottle	7" x 3-1/2" x 15-3/4"	30*	11 (11)
PR-ITBC3	3 bottle	10-5/8" x 3-1/2" x 15-3/4"	30*	15 (15)

\* Minimum 60 pieces; order in full cases.

## Gourmet Bottle Carriers



**"Seta Nero"**  
Black Linen Finish  
Bottle Carriers

**Sage Groove**  
Finish Bottle Carriers

**Natural**  
Smooth Kraft  
Bottle Carriers



# Custom Printed Wine Carriers & Boxes



(TAW) (WOO) (SNO) (ARG) (SBI) (PRO) (PBO) (ORO) (NAT) (PMA) (GRI) (NER)

## Wine Carriers & Boxes



**4-Color Process Print**

Minimum 60 Boxes

**Price includes:  
Printing, Product,  
& ALL Setup Charge**



Price per EACH

Product Code	Style	Size	Ctn
<b>Textured Rib Finish (TAW) or (BOR)</b>			
PR-LTBB1	1 Bottle Box Vertical	3-1/2" x 3-1/2" x 13-3/8"	20
PR-LTBB1TAWH	1 Bottle Box Horiz	3-1/2" x 3-1/2" x 13-1/4"	25
PR-LTBB2	2 Bottle Box	7-1/8" x 3-1/2" x 13"	10
PR-LTBB3	3 Bottle Box	10-3/4" x 3-1/2" x 13"	10
PR-LTBC4TAW	4 Bottle Carrier	7" x 7" x 13"	20
<b>IT Series Colors (See pg 42 &amp; 43 for color/size availability)</b>			
PR-ITBS1	BS1 Bottle Carrier	3-1/2" x 3-1/2" x 15" - 4 Colors	100
PR-ITBC1	1 Bottle Carrier	3-1/2" x 3-1/2" x 15" - 7 Colors	50
PR-ITBC2	2 Bottle Carrier	7" x 3-1/2" x 15" - All 10 Colors	30
PR-ITBC3	3 Bottle Carrier	10-5/8" x 3-1/2" x 15" - 9 Colors	30
PR-ITBBV1NAT	1 Bottle Box - End Opening	3-1/2" x 1-1/2" x 13-3/8" - NAT Only	50
PR-ITBBMNER	Magnum Bottle Box	4-1/2" x 4-1/2" x 16-3/4" - NER only	20
PR-ITBB1	1 Bottle Box	3-3/4" x 3-3/4" x 13-3/8" - ORO, NER	100
PR-ITBB2	2 Bottle Box	7-1/4" x 3-1/2" x 13-3/8" - 4 Colors	30
PR-ITBB3	3 Bottle Box	11" x 3-1/2" x 13-3/8" - 4 Colors	30

**Price above includes one side printing, product and ALL set up charges.**

Must be ordered in full cases.

Production Time: 7-10 business days from proof approval

Subject to review of artwork and pricing if print area exceeds 75% of print surface.

Exact PMS colors are not possible as all colors are converted to CMYK. Reference a Pantone PMS color bridge to see how your PMS color will appear. Prices subject to review of art. Additional charges may apply to orders with excess ink coverage.

© Identifies products manufactured in China that have recently been affected by a tariff. The tariffs are included in these prices.

## Italian Wine Packaging



*"Sfere Bianco"*

Bubble Texture  
1 & 2 Bottle Carriers



*"Pelle Bordeaux"*

Dark Red Pebble  
2 & 3 Bottle Carriers



*"Alpine Snowflake"*

Linen Embossed  
1, 2 & 3 Bottle Carriers, Boxes, & Bags

# Italian Wine Packaging

**New!**  
Colored Interior



*"Bordeaux"*  
Textured Rib



**New!** *"Red"*  
Textured Rib



**New!**  
Arched Windows



*"Tawny"*  
Textured Rib



BB1TAWH



BBV1



**New!**  
BB1TAW





# Italian Wine Packaging



**New!**

*"Barn Wood"*

*Satin Embossed  
1, 2 & 3 Bottle Carriers  
Bottle Boxes w/ inserts*



*"Grigio"*  
*Gray Groove*  
*1, 2 & 3 Bottle Carriers*



*"Oro"*  
*Matte Gold Linen*  
*Bottle Carriers,  
Bottle Boxes w/ inserts  
and Bottle Side-Opening*



*"Argento"*  
*Metallic Silver Linen Foil*  
*1, 2 & 3 Bottle Carriers,  
Bottle Boxes w/ inserts  
and Bottle Side-Opening*



*"Pelle Rosso"*  
*Red Pebble*  
*2 & 3 Bottle Carriers*

# Italian Wine Packaging

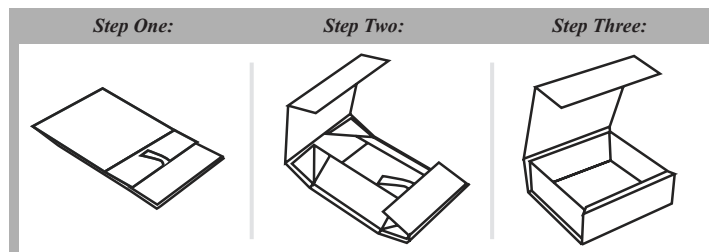


## Rigid Folding Wine Boxes



### 4-Color Process Print Minimum 50 Boxes

- Fully Collapsible
- High Gloss Finish
- Superior Printing Surface
- Ships flat
- Full length inserts included for BB2
- Magnetic Closure



Size	Actual Wt Each	<i>Unprinted</i>		<i>4-Color Process Print</i>	
		5 per package	Price per EACH	5 per package	Price per EACH
Rigid Folding Wine Boxes: Black Gloss (GBLA) & White Gloss (GWHI)					
Single 13-1/2" x 3-5/8" x 3-1/2"	0.8	RF-XBB1____		PR-RFBB1____	
Double w/divider 13-1/2" x 7-1/2" x 3-1/2"	1.1	RF-XBB2____		PR-RFBB2____	



# Magnetic Gift Boxes & Tins with Twist Lids

**New!**  
**Natural Kraft**  
**Finish**



Product Code	Size	Ctn	Actual (Ship) Weight	Price per CTN
<b>Magnetic Gift Boxes - Matte Finish Colors: Black (BLA), White (WHI), Natural Kraft (KRA) &amp; Pewter (PEW) (Magnetic Closure)</b>				
MC-751	7-1/4" x 5-1/2" x 1-1/2"	10	4.9 (5)	SS ©
MC-821	8" x 2-3/4" x 1-5/8"	10	2.4 (3)	
MC-1071	10-13/16" x 7-3/16" x 1-9/16"	10	5.0 (5)	
<b>Tins with Twist Clear Lids (Food Grade - Twist Top Closure - Air Tight)</b>				
TN-TW2376SIL	Small - 1-1/2" dia, 1" tall	100	3.0 (3)	©
TN-TW2377SIL	Medium - 1-7/8" dia, 1" tall	50	2.0 (4)	
TN-TW2363SIL	Large - 2-1/2" dia, 1-1/2" tall	50	3.7 (5)	
<b>Tin Inserts for Magnetic Gift Boxes</b>				
MC-INS12SM	12 Small Tins - Fits MC-751	10	0.2	©
MC-INS6MD	6 Medium Tins - Fits MC-1071	10	0.2	
MC-INS6LG	6 Large Tins - Fits MC-1071	10	0.6	

**Mix & Match:** Use the insert for 6 small tins and 6 medium tins together in the MC-1071 as shown above.



## 4-Color Process Print

**Minimum 50 Pieces**

Product Code	Size	Ctn
<b>Magnetic Gift Boxes (All Colors Above)</b>		
PR-MC751	7-1/4" x 5-1/2" x 1-1/2"	10
PR-MC821	8" x 2-3/4" x 1-5/8"	10
PR-MC1071	10-13/16" x 7-3/16" x 1-9/16"	10

Price per EACH

## Screen Printing

Price per EACH

Add Charges below to unprinted product above

### Price per Impression/Color

Minimum Print Charge  
Less than 1,000 pieces  
1,000 and above

**Price above includes one side printing, product and ALL set up charges.**

Must be ordered in full cases.

Production Time: 7-10 business days from proof approval

Subject to review of artwork and pricing if print area exceeds 75% of print surface.

Exact PMS colors are not possible as all colors are converted to CMYK. Reference a Pantone PMS color bridge to see how your PMS color will appear. Prices subject to review of art. Additional charges may apply to orders with excess ink coverage.





## All Tins Food Grade

<i>All Tins Food Grade</i>		<i>Unprinted</i>			<i>4-Color Process Print</i>					
	Actual (Ship) Wt			Price per Each				Price per Each		
Size	10/case	Prod Code	Each	10-90 100+	Prod Code	50	100	250	500+	
<b>Rectangular Tins with PET Window</b>		Colors: White (WHI), Red (RED) or Silver (SIL) 2 piece								⊗
4-1/8" x 3" x 2-1/2"	2 (11)	TN-X2322SIL			PR-TNX2322SIL					
8" x 6-3/4" x 3-1/8"	6 (23)	TN-X2348			PR-TNX2348					
6-7/8" x 5" x 1-5/8"	4 (12)	TN-X2367			PR-TNX2367					
10" x 8-1/4" x 3-1/4"	10 (32)	TN-X2371SIL			PR-TNX2371SIL					
<b>Presentation Tins (Hinged Lid)</b>										⊗
12" x 9" x 1/2"	8 (9)	TN-X2319			PR-TNX2319					
12" x 9" x 1-3/4"	11 (48)	TN-X2372			PR-TNX2372					
<b>Round Tins with PET Window (Diameter x Height) 2 piece</b>										⊗
4" x 2"	2 (12)	TN-X2314			PR-TNX2314					
6" x 2-1/2"	4 (11)	TN-X2310			PR-TNX2310					
<b>Gift Card / CD Tin (Hinged Lid; includes Insert for CD or Gift Card)</b>										⊗
5-1/4" x 5-1/4" x 3/8"	3 (3)	TN-X2356			PR-TNX2356					

Tins are Food Grade and comply with requirements stated in FDA regulations.

Price above includes one side printing, product and ALL set up charges.

Must be ordered in full cases.

Production Time: 7-10 business days from proof approval

Subject to review of artwork and pricing if print area exceeds 75% of print surface.

Exact PMS colors are not possible as all colors are converted to CMYK. Reference a Pantone PMS color bridge to see how your PMS color will appear. Prices subject to review of art. Additional charges may apply to orders with excess ink coverage.

